



# CLASS OF 2025

## COURSE SELECTION

# YOUR LAND O' LAKES HIGH TEAM



**PRINCIPAL**

Mr. Mellin



**ASSISTANT  
PRINCIPAL**

Mrs. Wall

[hwall@pasco.k12.fl.us](mailto:hwall@pasco.k12.fl.us)

*Administration*





# Your Land O' Lakes High Grad Team



## School Counselor

Ms. Garcia

[Kgarcia@pasco.k12.fl.us](mailto:Kgarcia@pasco.k12.fl.us)



## Graduation Coach

Ms. Campbell

[Acampbel@pasco.k12.fl.us](mailto:Acampbel@pasco.k12.fl.us)



## College/Career Specialist

Mrs. Colon

[Sfraneco@pasco.k12.fl.us](mailto:Sfraneco@pasco.k12.fl.us)

# STAY IN TOUCH WITH YOUR TEAM



## ➤ REMIND

- Text @LOLHS20251 to 81010



## ➤ Twitter

- Follow @LOLHS2025
  - Ric Mellin
- @LOLHSprincipal

# Today's Objectives

## ❖ KNOW

- ✓ Course requirements
- ✓ Elective requirements
- ✓ Academy and elective opportunities

## ❖ DO

- ✓ Choose 3 Core Course
- ✓ Choose 2 required elective course
- ✓ Choose 1 choice elective course
- ✓ Choose 3 back up electives and number them 1-3

# ENGLISH PATHWAYS

## (4 Credits)

8<sup>th</sup> Language Arts  
ELA



9<sup>th</sup> English 1

8<sup>th</sup> Language Arts  
ADVANCED



9<sup>th</sup> English 1  
HONORS



# MATH PATHWAYS

## (4 Credits)

Gators

8<sup>th</sup> Grade  
Mathematics

8<sup>th</sup> Grade  
Mathematics with  
A's and B's

8<sup>th</sup> Grade  
Algebra 1  
HONORS

8<sup>th</sup> Grade  
Geometry  
HONORS

9<sup>th</sup> Algebra 1

9<sup>th</sup> Algebra 1  
honors

9<sup>th</sup> Geometry  
honors

9<sup>th</sup> Algebra II  
honors

10<sup>th</sup> Liberal Arts 1

10<sup>th</sup> Geometry  
honors

10<sup>th</sup> Algebra II  
honors

10<sup>th</sup> advanced  
math topics, prob &  
Stat honors, or pre-  
calculus

11<sup>th</sup> Geometry

11<sup>th</sup> Algebra II  
(or)  
Algebra II honors

11<sup>th</sup> Advanced math  
topics, prob & Stat  
honors, pre-calculus

11<sup>th</sup> AP statistics  
or AP calculus

12<sup>th</sup> Math for  
College  
Readiness

12<sup>th</sup> Advanced math  
topics, Prob & Stat  
Honor, Pre-Calculus

12<sup>th</sup> AP calculus  
or AP statistics

12<sup>th</sup> AP statistics  
or AP calculus

# SCIENCE PATHWAYS

## (3 CREDITS)

### 8<sup>TH</sup> Grade C's or below

- 9th Agri science (or) Earth/Space Science
- 10<sup>th</sup> Biology
- 11<sup>th</sup>/12<sup>th</sup> Marine science (or) Forensics (or) Anatomy & Physiology

### 8<sup>TH</sup> Grade Science/Advanced Science

- 9th Biology
- 10<sup>th</sup> Marine Science (or) Environmental Science (or) Forensics
- 11<sup>th</sup>/12<sup>th</sup> Marine Science (or) Anatomy & Physiology (or) Forensics

### 8<sup>TH</sup> Grade Science/Advanced Science (A or B in current science)

- 9<sup>th</sup> Biology honors
- 10<sup>th</sup> Chemistry honors
- 11<sup>th</sup> AP (or) Dual enrollment (or) Science honors
- 12<sup>th</sup> Ap (or) Dual enrollment (or) Science honors

# SOCIAL STUDIES PATHWAYS

## (3 CREDITS)

### 8<sup>TH</sup> Grade World History

- 9th No required course
- 10<sup>th</sup> World History (or) World History honors
- 11<sup>th</sup> US History (or) US History honors
- 12<sup>th</sup> Econ/Gov (or) Econ/Gov honors

### 8<sup>TH</sup> Grade Adv World History

- 9th World History honors
- 10<sup>th</sup> AP Human Geography (elective)
- 11<sup>th</sup> AP US History
- 12<sup>th</sup> AP Government and AP Macro Economics

### 8<sup>TH</sup> Grade Adv World History (A's and B's)

- 9<sup>th</sup> AP Human Geography
- 10<sup>th</sup> AP World History
- 11<sup>th</sup> AP US History
- 12<sup>th</sup> AP Government and AP Macro Economics

# FINE ART

## FINE ART

- 2-D Studio Art 1
- Band
- \*Jazz Band
- \*Percussion
- Chorus
- Acting 1
- Dance Techniques

## FINE ART Equivalent

- Digital Information Technology  
(This can meet online requirement)
- Journalism 1
- Technical Design 1
- Digital Design  
(This can meet online requirement)



# ART

## 2-D STUDIO ART 1



# BAND

- ❖ Open to all students, no experience needed.
- ❖ All band students are members of marching and concert bands.
- ❖ Performances are at football games, festivals, and school concerts/events.
- ❖ Regularly travels throughout FL and one trip (May) to Washington, D.C.



\*Jazz band: Needs Mr. Mulder's approval

\*Percussion: Drummers only



# CHORUS



- Open to all students
- Performs at festivals, school, and community events.



# ACTING

LAND O' LAKES HIGH SCHOOL TROUPE 4740 PRESENTS:  
**JANUARY 16TH, 17TH, AND 18TH**  
7PM @ WESLEY CHAPEL PERFORMING ARTS CENTER



PRESALE TICKETS CAN BE PURCHASED IN THE  
MEDIA FOR \$10 DEC. 16-JAN. 10  
SEE MRS. HYDES FOR MORE INFORMATION!  
TICKETS AT DOOR ARE \$15



# DANCE TECHNIQUES

- ❖ Cheer
  - Competitive
  - Sideline
- ❖ Color & Winter guard
  - Performs with marching band (fall)
  - May perform with competitive team (Spring)
- ❖ Incorporates dance and choreography with equipment
- ❖ Perfect for those who have a dance background



# JOURNALISM



- School news
- Sports updates
- Yearbook
- Spirit contest



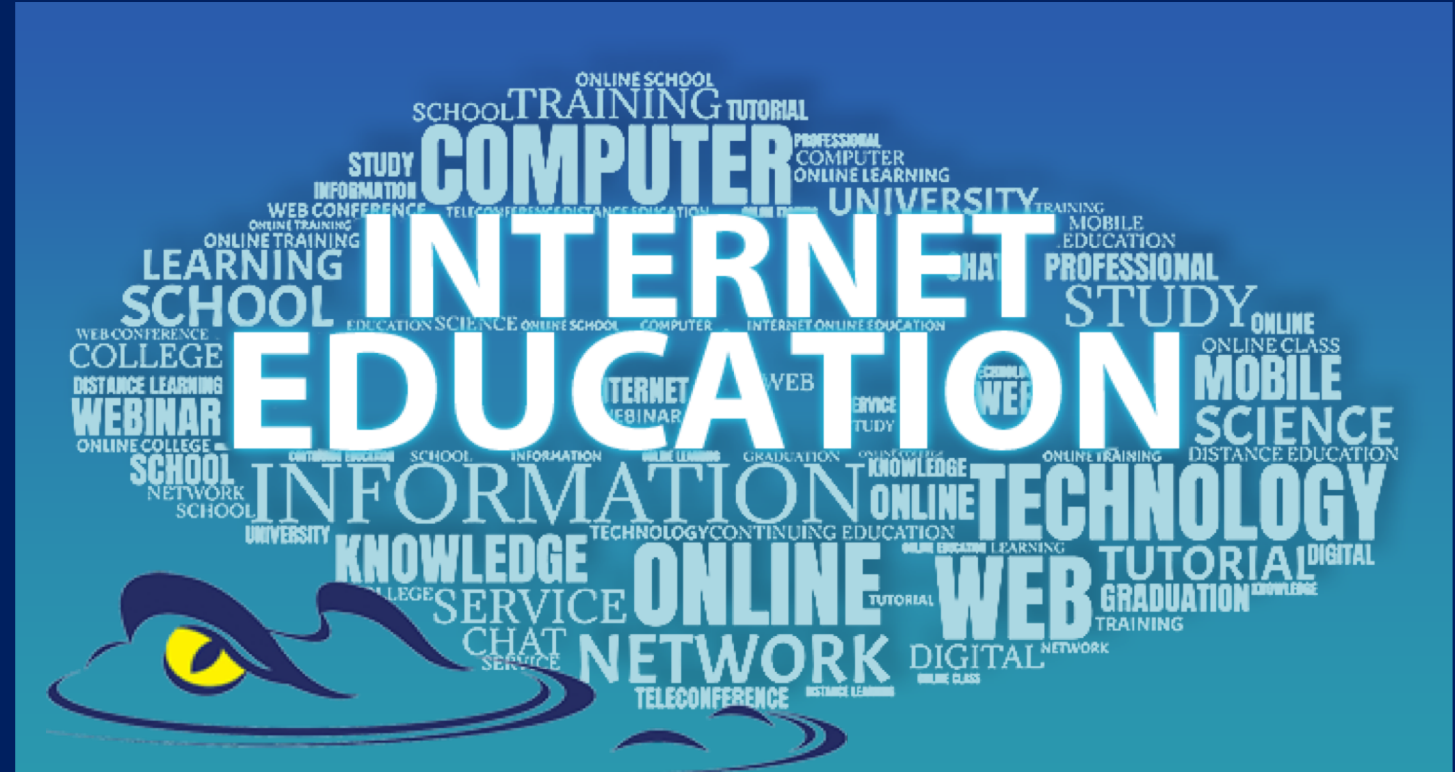
- ## ➤ Fine Arts Credit

- ## ➤ Online credit

- 

# DIGITAL INFORMATION TECHNOLOGY

- ▶ FINE ARTS CREDIT
- ▶ ONLINE CREDIT
- ▶ PowerPoint, Word, Excel, Canvas







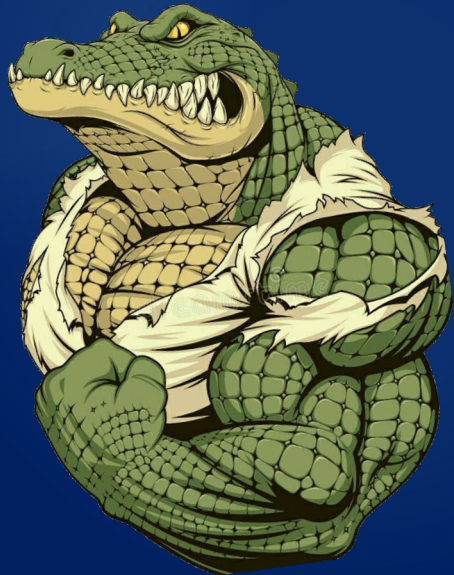
# Welcome to the Swamp

## PHYSICAL EDUCATION

- At LOLHS during school hours
- HOPE meets online requirement

- HOPE (On campus)
- \*HOPE (Online)

\*Contact Mrs. Garcia about HOPE online



## =5 CLASSES TOTAL

| Land O' Lakes High School                  |  |  |  |  |  |
|--|--|--|--|--|--|
| Make 6 total selections and 3 alternatives |  |  |  |  |  |
| Language Arts-Required (1)                 |  |  | HOPE-Grad. Requirement                         |  |  |
| English I                                  |  |  | HOPE (On Campus)                               |  |  |
| English I Honors                           |  |  | Personal Fitness (Online)                      |  |  |
| School Placement based on test scores      |  |  | Team Sports I/II (Sem)                         |  |  |
|  |  |  | Recreation (Sem)                               |  |  |
|  |  |  | Basketball (Sem)                               |  |  |
| Mathematics-Required (1)                   |  |  |  |  |  |
| Algebra I                                  |  |  | 2 years of March. Band                         |  |  |
| Algebra 1 Honors                           |  |  | *HOPE (Summer Online)                          |  |  |
| Geometry Honors                            |  |  |  |  |  |
| Algebra II Honors                          |  |  | Academy CTE Programs                           |  |  |
| School Placement based on test scores      |  |  | Agriculture                                    |  |  |
|  |  |  | Technical Design                               |  |  |
|  |  |  |  |  |  |
| Science-Required (1)                       |  |  | Early Childhood                                |  |  |
| Agriscience Foundations                    |  |  | Nutrition and Food Science                     |  |  |
| Biology                                    |  |  |  |  |  |
| Biology Honors                             |  |  | World Languages                                |  |  |
| Chemistry Honors                           |  |  | Spanish I                                      |  |  |
| School Placement based on test scores      |  |  | Spanish II                                     |  |  |
|  |  |  | Spanish III (Honors)                           |  |  |
| Fine Art-Grad. Requirement                 |  |  | French I                                       |  |  |
|  |  |  |  |  |  |
| Band                                       |  |  | ASL I  |  |  |
| Chorus                                     |  |  | ASL II   |  |  |
| Art 2D                                     |  |  |  |  |  |
|  |  |  | Academic Electives-Optional                    |  |  |
| Acting I                                   |  |  |  |  |  |
| Dance Techniques I                         |  |  | Creative Writing I/II                          |  |  |
| Journalism I                               |  |  | World Cultural Geography                       |  |  |
| Digital Info Technology                    |  |  | ***AP Comp Sci Principles                      |  |  |
|  |  |  | ****Accelerated Literacy                       |  |  |
| Social Studies                             |  |  | *MS Counselor Signature Necessary for Approval |  |  |
| *AP Human Geography                        |  |  | **Eligibility based on Grades & FSA Scores     |  |  |
| *World History Honors                      |  |  | ***Student must have passed Algebra 1          |  |  |
| * Co Enrollment                            |  |  | ****Student placed in course if FSA ELA=1      |  |  |
|  |  |  |  |  |  |
|  |  |  |  |  |  |
|  |  |  |  |  |  |
|  |  |  |  |  |  |
|  |  |  |  |  |  |
| Email Address: _____                       |  |  |  |  |  |
|  |  |  |  |  |  |

# ACADEMIC ELECTIVES

ACADEMY

**Culinary**

Career Technical  
Education

- **Technical  
Design**
- **Early  
Childhood**

# ACADEMIC ELECTIVES

## World Languages

- Spanish
- French
- ASL

## Academic Electives

- Creative Writing I/II
- World Cultural Geography
- AP Computer Science Principles\*\*
- Business Entrepreneurship



# CULINARY ACADEMY

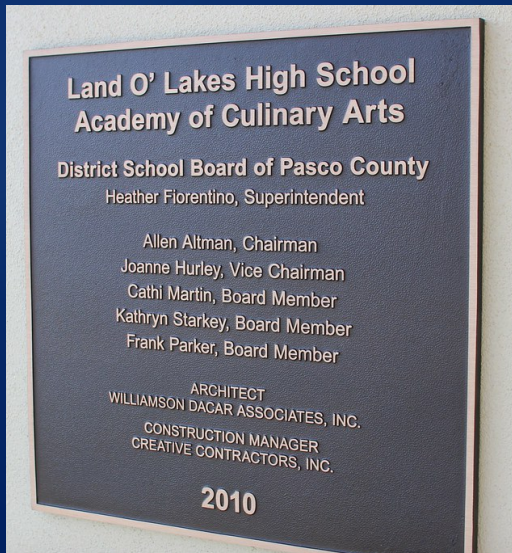
## Nutrition & Food Science

Culinary 1

Culinary 2

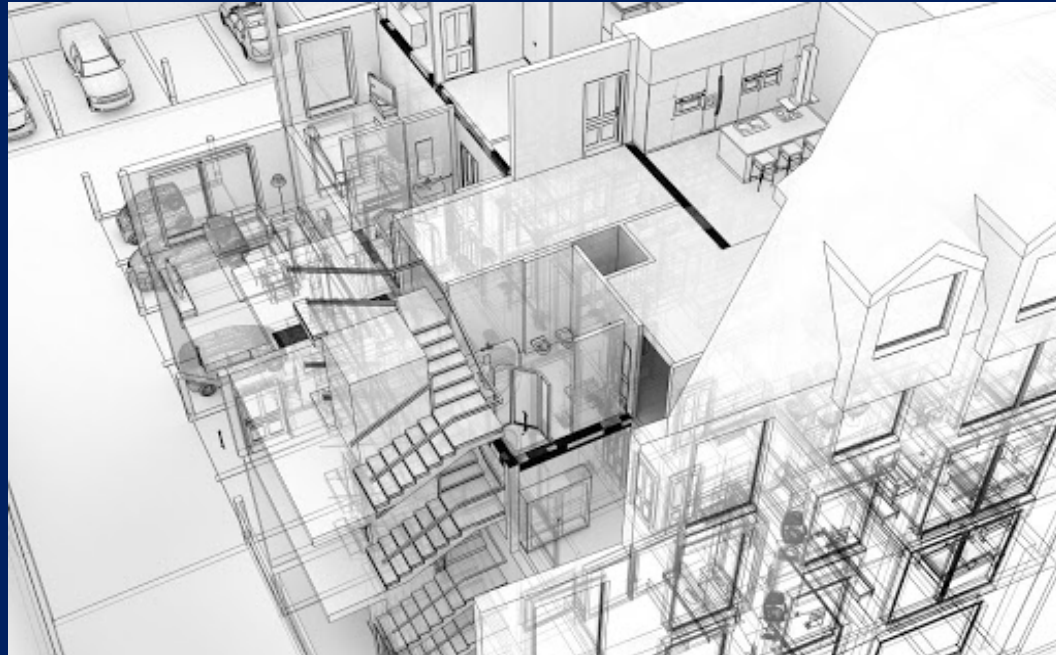
Culinary 3

Culinary 4



# TECHNICAL DESIGN

- Fine arts credit
- Online credit
- Auto-Cad





# EARLY CHILDHOOD



# AP COMPUTER SCIENCE PRINCIPLES

- Students gain a foundation to how computer science relates to everyday life
- This is NOT a programming class
- Exposes students to the process of building interactive applications by using “block based” programming
- Not a coding language





# FINAL CHECK

## ❖ You should have selected

- 1 English class
  - 1 Math class
  - 1 Science class
  - 1 HOPE
  - 1 Fine Art (optional)
  - 1 Additional Elective
- =6 total classes

## ❖ Made 3 back up choices

## ❖ Prioritized 1-3

## ❖ Final schedule changes must be turned in by March 1<sup>st</sup>, 2021

## ❖ Any schedule changes email [kgarcia@pasco.k12.fl.us](mailto:kgarcia@pasco.k12.fl.us) OR [hwall@pasco.k12.fl.us](mailto:hwall@pasco.k12.fl.us)



# QUESTIONS

- Do you have courses selected?
- Any additional questions?



Please remember:

\*Class of 2025 remind  
Text 81010 to LOLHS2025

\*Class of 2025 Twitter  
@LOLHS2025