



Pine View Middle School



An International Baccalaureate Middle Years Programme
Candidate School

Who we are...



- ✦ Premier International Baccalaureate Middle Years Programme (IB MYP) in Pasco County
- ✦ Established in 1976
- ✦ Dedicated to Excellence
- ✦ “A” school for 15 years

Where we are...



- ✦ Premiere Middle Years Programme Candidate School in Pasco County
- ✦ One of the two middle schools serving the Land O' Lakes community
- ✦ Educating a diverse population of internationally minded, 21st century learners
- ✦ Continuing academic excellence

Where we are going...



- ✦ Preparing our diverse population of learners to be:
 - ✦ Collaborative
 - ✦ Communicators
 - ✦ Creative
 - ✦ Problem solvers
 - ✦ Facilitators of their own learning
 - ✦ College, career and life ready

- ✦ Providing a natural progression for students in traditional, STEAM and Primary Years Programmes in the Land O' Lakes community of schools.

How we are similar to all Pasco County middle schools

- ✦ 30 minute lunches
- ✦ Participation in extra-curricular activities
- ✦ Bus transportation
- ✦ Pasco County Curriculum Maps and Quarterly Checks
- ✦ Florida Standards and Florida Standards Assessment
- ✦ End of Course exams
- ✦ Florida Teacher Certification
- ✦ Online blended learning opportunities
- ✦ Rigor and Relevance
- ✦ Compliance for:
 - ✦ Education Plans (EPs)
 - ✦ Individual Education Plans (IEPs)
 - ✦ Section 504 Plans

How do we differ from other schools?

- ✦ ALL students are Middle Years Programme Students
- ✦ All eight subject area classes are core classes.
- ✦ Global perspectives, inquiry-based, hands on learning and reflection are all embedded into units
- ✦ Learner Profiles are infused into the entire school culture
- ✦ Service Learning/Community Project
- ✦ Technology opportunities in technology class, blended classrooms, and technology infused classrooms
- ✦ Magnet school

Eight Subject Areas of the MYP



Each year, all students take (with the exception of Accelerated Literacy and students recovering credits):

- Language Acquisition
- Arts (performing and visual over their time at PVMS),
- PE
- Design

Learner Profiles



10 attributes we want all students, staff and stakeholders to embody to create a better and more peaceful community and world.

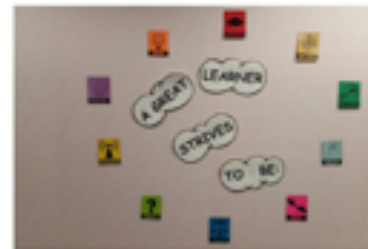
- ✦ Principled
- ✦ Thinkers
- ✦ Knowledgeable
- ✦ Risk-takers
- ✦ Open-minded
- ✦ Reflective
- ✦ Caring
- ✦ Balanced
- ✦ Communicators
- ✦ Inquirers

Learner Profiles



- ✦ Student of the Month
- ✦ Learner Profile Tickets
- ✦ Infused in classrooms, lessons and activities
- ✦ Reflections on academics and behavior

Learner Profiles



Service Learning and the Community Project

- ✦ Service Learning is embedded into our culture at PVMS through natural connections with the curriculum as well as our Week of Service, the Iron Giraffe Challenge, Pasta for Pennies and drives throughout the year to help our local and global communities
- ✦ The Community Project is the culmination and celebration of student learning and service learning in Years One, Two and Three
 - ✦ Gives groups of students an opportunity to develop an awareness of community, national or global needs and address those needs through service learning
 - ✦ Students generate creative new insights and develop deeper understandings through in-depth investigation

MYP Policies



✦ Academic Honesty Policy

- ✦ Outlines the expectations of integrity and honesty for all stakeholders at PVMS.

✦ Assessment Policy

- ✦ Outlines procedures to ensure that assessment supports student learning.

✦ Language Policy

- ✦ Provides support for students who are not yet proficient in English. The policy focuses specifically on needs in Language and Literature and Language Acquisition courses, but defines support across the school.

✦ Special Needs Policy

- ✦ Defines how the MYP is inclusive for all PVMS students.

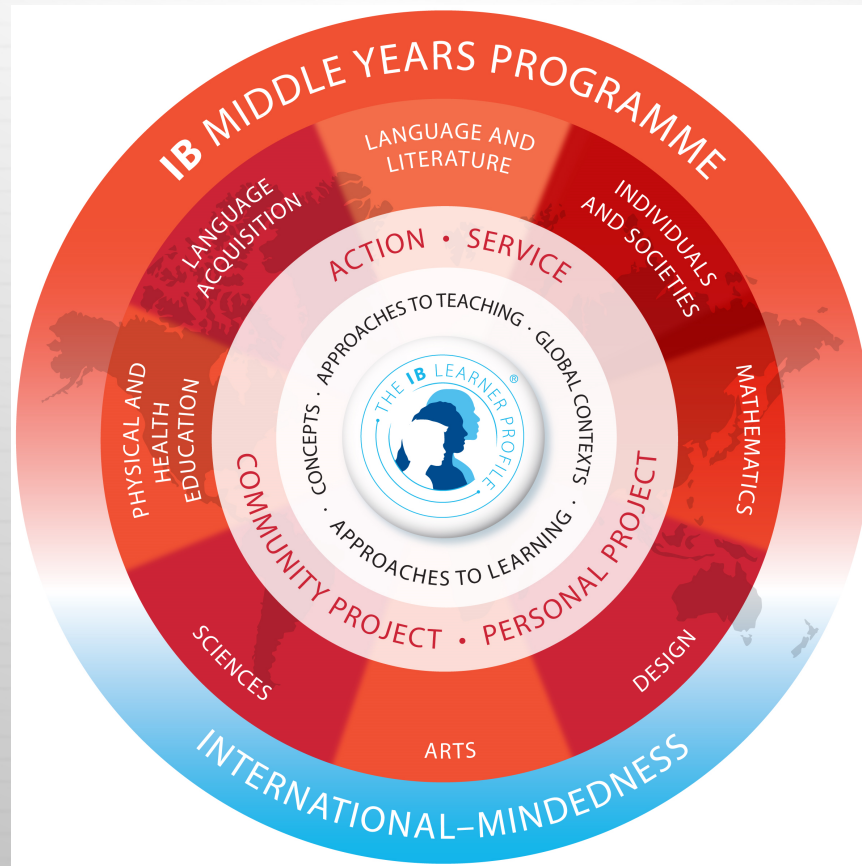
Technology at PVMS



✦ Please go to the youtube link below to watch a video about one of our Design classes at PVMS

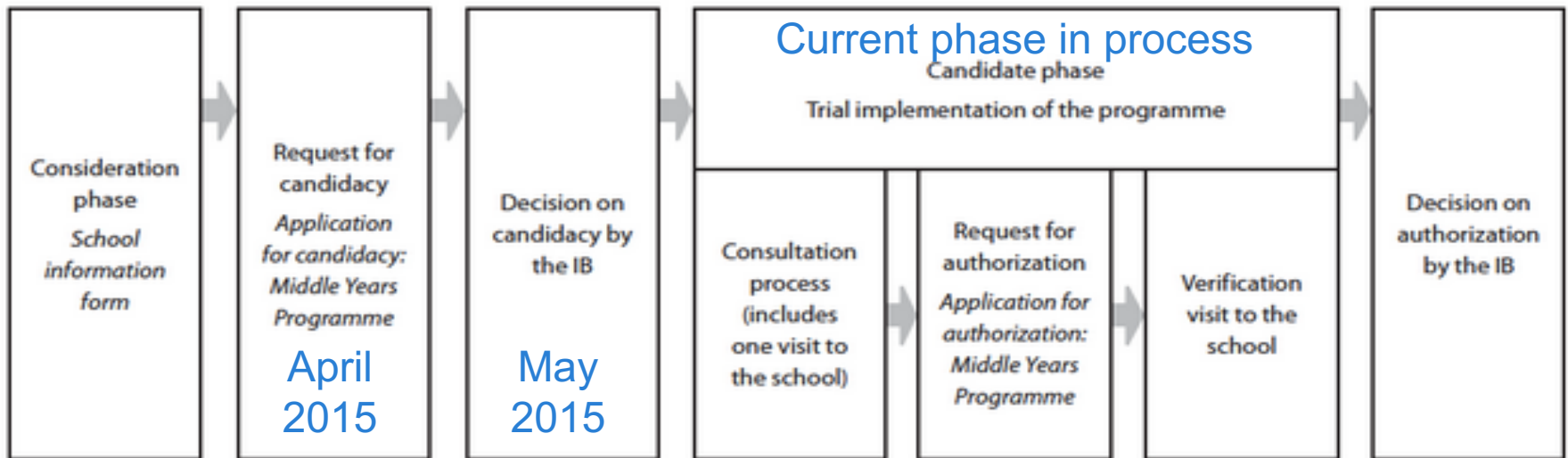
✦ <https://www.youtube.com/watch?v=UoCK9mxsHbc>

MYP Programme Model



Why are we considered an MYP candidate school?

Overview of the authorization process



Magnet School



- ✦ If you are zoned for PVMS, you do not have to apply
- ✦ Magnet school choice application window open now
 - ✦ 12/4/17- 1/12/18
- ✦ Transportation provided via hub system
 - ✦ Hubs will be located at Weightman and Rushe Middle Schools. Additional hubs may be setup based on the addresses of accepted applicants.
- ✦ Notification of Application Status: 2/12/2018

Magnet school



- ✦ Lottery style selection process. The order in which applications are received will not impact the lottery selection process. Applications DO NOT guarantee placement.
- ✦ Students currently enrolled at the magnet themed middle school and/or students who live within the schools' attendance zones do not have to reapply, unless they live outside of Pasco County.
- ✦ Incomplete and/or inaccurate information may prevent an application from being processed.
- ✦ Failure to respond to an offer of acceptance by the date specified in the email will be interpreted as a parent/guardian decline of program acceptance and the seat will be offered to another student.

Priority Preference Criteria



- ✦ Students attending a magnet theme that is offered at the next level of promotion.
- ✦ A student who is a sibling of an accepted student and will attend the magnet theme school site at the same time as the accepted student.
- ✦ Parent is a Pasco County Schools employee within the feeder pattern of the magnet middle school for which the student is applying.
- ✦ Student is zoned for a school that is overcrowded.
- ✦ Any applicable preferential treatment as set forth in Florida law.

How do I apply?



Visit

<http://www.pascoschools.org/magnet>

and click on "Middle School Magnet
Application"

What activities can Year 1 students join?



- ✦ Jr. MYP Council
- ✦ STEM Club
- ✦ Band/Flag Corp
- ✦ Robotics
- ✦ Cooking Club
- ✦ Agriculture/Future Farmers of America (FFA)
- ✦ PVMS Morning News
- ✦ TEDx
- ✦ Fellowship of Christian Students
- ✦ Drama (Fall and Spring Plays)
- ✦ Thespians
- ✦ Yearbook

Questions?

