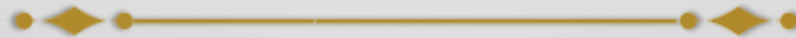


The background of the slide features a collage of various international postage stamps and currency notes. Visible stamps include one from Costa Rica with a circular postmark, another from Madrid, and one with the word 'PAR AVION' (by air). Currency notes include a 100.00 Euro note and a 100.00 US Dollar note. The collage is rendered in a faded, artistic style.

Pine View Middle School



An International Baccalaureate Middle Years Programme
Candidate School

Who we are...



- ✦ Premier International Baccalaureate Middle Years Programme (IB MYP) in Pasco County
- ✦ Established in 1976
- ✦ Dedicated to Excellence
- ✦ “A” school for 15 years

Where we are...



- ✦ One of the two middle schools serving the Land O' Lakes community
- ✦ Educating a diverse population of internationally minded, 21st century learners
- ✦ Continuing academic excellence

Where we are going...



- ✦ Preparing our diverse population of learners to be:
 - ✦ Collaborative
 - ✦ Communicators
 - ✦ Creative
 - ✦ Problem solvers
 - ✦ Facilitators of their own learning
 - ✦ College, career and life ready

- ✦ Providing a natural progression for students in traditional learning environments, STEAM schools and Primary Years Programmes in the Land O' Lakes community of schools.

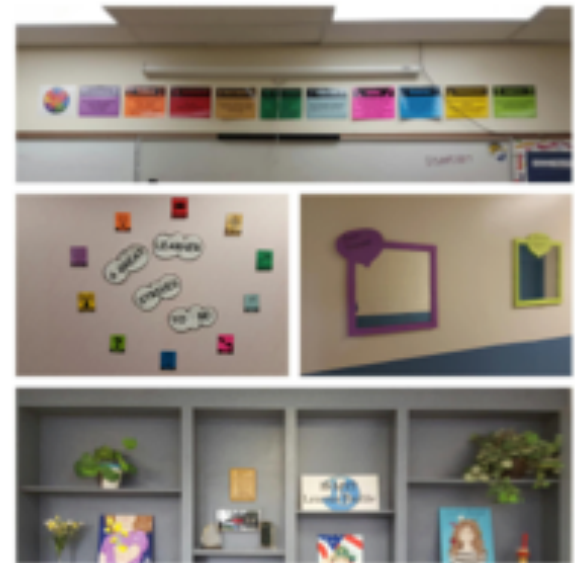
How we are similar to all Pasco County middle schools

- ✦ 30 minute lunches
- ✦ Participation in extra-curricular activities
- ✦ Bus transportation
- ✦ Pasco County Curriculum Maps and Quarterly Checks
- ✦ Florida Standards and Florida Standards Assessment
- ✦ End of Course exams
- ✦ Florida Teacher Certification
- ✦ Online blended learning opportunities
- ✦ Rigor and Relevance
- ✦ Compliance for:
 - ✦ Education Plans (EPs)
 - ✦ Individual Education Plans (IEPs)
 - ✦ Section 504 Plans

How do we differ from other schools?

- ✦ ALL students are Middle Years Programme Students
- ✦ All classes are core classes. All students take Language Acquisition (with the exception of Accelerated Literacy students), Arts (performing and visual over their time at PVMS), PE and Design each year at PVMS.
- ✦ Global perspectives, project-based, hands on learning and reflection are all embedded into units
- ✦ Learner Profiles are infused into the entire school culture
- ✦ Service Learning/Community Project
- ✦ Slightly extended bell schedule with an extra period in the day to accommodate the eight core subject areas of the MYP
- ✦ Technology opportunities in technology class, blended classrooms, and technology infused classrooms

Learner Profiles



Community Project and Service Learning

- ✦ Service Learning is embedded into our culture at PVMS through our Week of Service, Iron Giraffe Challenge, Pasta for Pennies and drives throughout the year to help our local and global communities
- ✦ The Community Project is the culmination and celebration of student learning and service learning in Years One, Two and Three
 - ✦ Gives groups of students an opportunity to develop an awareness of community, national or global needs and address those needs through service learning
 - ✦ Students generate creative new insights and develop deeper understandings through in-depth investigation

Eight Subject Areas of the MYP




Rotating Schedule



- ✦ Allows for implementation of all eight Middle Years Programme subject areas in a 6 period day
- ✦ Traditional core classes (Individuals & Societies, Language and Literature, Math and Science as well as Music) meet every day
- ✦ Encore classes (Arts, Design, Language Acquisition and Physical and Health Education with the exception of Music) meet on a rotating, every other day schedule
- ✦ Encore classes are semester classes, but because they are every other day, they last the full school year

Year One Schedule Example- No Band/Music



"A" Day


1 st period	Ind. & Soc.
2 nd period	Lang. and Lit.
3 rd period	Math
4 th period	Science
Lunch	Lunch
5 th period	Phys/Health Ed. (PE)
6 th period	Art

"B" Day

1 st period	Ind. & Soc.
2 nd period	Lang. and Lit
3 rd period	Math
4 th period	Science
lunch	Lunch
5 th period	Design
6 th period	Language Acq.

*Classes will generally rotate M/W/F one week and T/Th the following week.

Year One Schedule Example with Band or Chorus



"A" Day

1 st period	Ind. & Soc.
2 nd period	Lang. and Lit.
3 rd period	Math
4 th period	Science
Lunch	Lunch
5 th period	Band or Chorus
6 th period	Phys./Health Ed. (PE)

"B" Day

1 st period	Ind. & Soc.
2 nd period	Lang. and Lit.
3 rd period	Math
4 th period	Science
Lunch	Lunch
5 th period	Band or Chorus
6 th period	Language Acq.

*Classes will generally rotate M/W/F one week and T/Th the following week.

Schedule card

Pine View Middle School
2017-18
Year 1 (6th grade)

STUDENT NAME: _____
STUDENT NUMBER: _____

XX Students Are Automatically Placed

Year 1 Requirements:

- XX Language & Literature (English Language Arts 1)
- XX Comprehensive Science 1
- XX Individuals & Society (US History)
- XX Mathematics 1



Parent Signature

Placement in Advanced classes will be based on FSA Scores, Quarterly Checks, Teacher Recommendation, District Matrix and Class Size.
Placement for Intensive Reading will be determined after receiving the scores from the standardized test and academic performance.
Intensive Reading will take place of Language Acquisition.

Choose one (1) course from each of the boxes below and mark it with an "X".
Select one (1) alternate from each of the boxes below and mark it with an "A".

LANGUAGE ACQUISITION

Beginning Spanish _____

*ASL 1 (Online) _____

*American Sign Language

ARTS

Chorus 1 _____

Beg Band _____

Art 1/Dance Tech _____

Art 1/Theatre 1 _____

DESIGN

Agriculture/PE _____

Culinary/PE _____

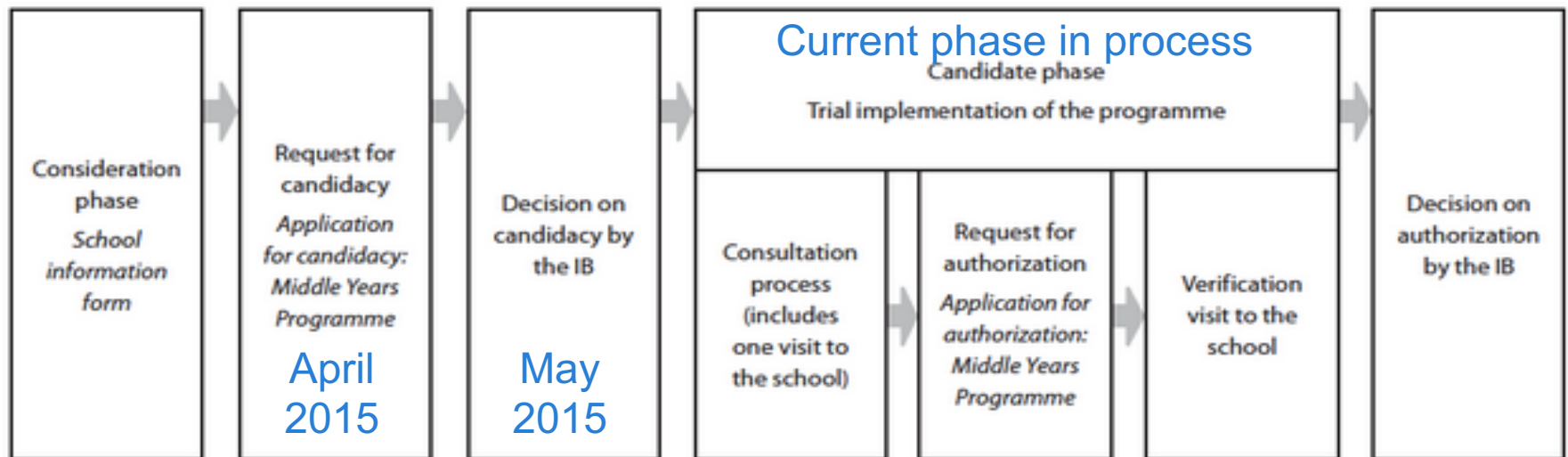
Graphic Arts/PE _____

Technology/PE _____

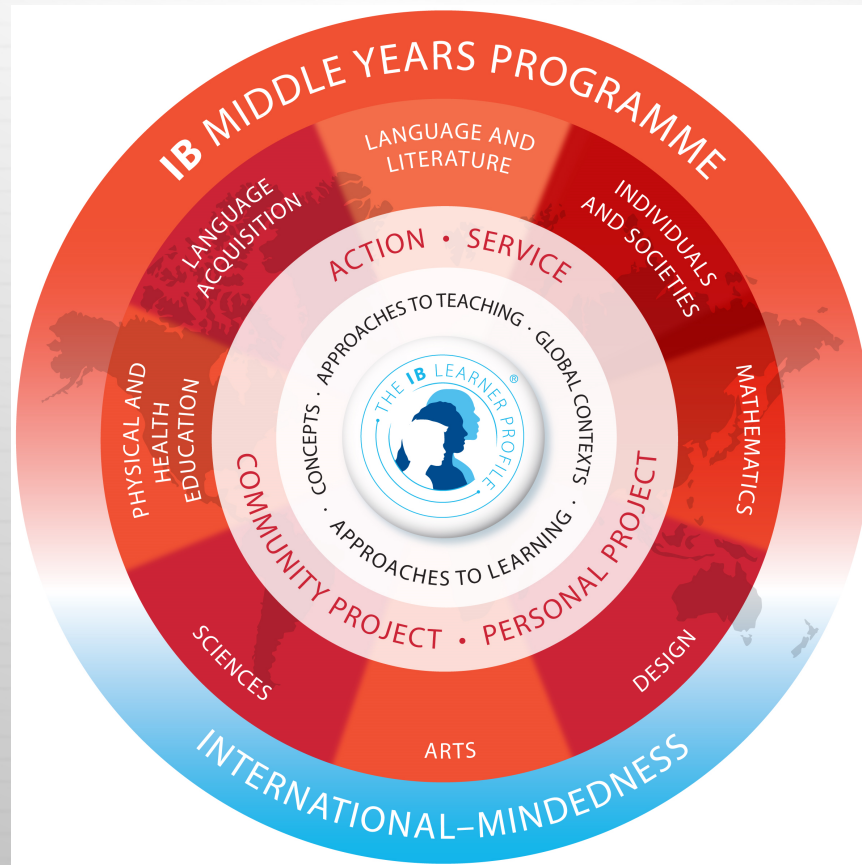
DUE TO STATE GRADE LEVEL REQUIREMENTS, CLASS SIZE AND EOC EXAMS, SCHEDULE CHANGE REQUESTS WILL BE VERY LIMITED.

Why are we considered an MYP candidate school?

Overview of the authorization process



MYP Programme Model



The header features a collage of various stamps and logos. On the left, there are red and black stamps, including one with the Chinese characters '航空郵便' (Airmail) and another with 'PAR AVION'. In the center, there is a circular gold-colored logo with a stylized figure. To the right, there are several red circular stamps, some of which contain the text '25TH' and '1956'.

What does a Year One
Student need to know?

What activities and clubs can I join?



- ✦ Jr. MYP Council
- ✦ Band/Flag Corp
- ✦ Robotics
- ✦ Cooking Club
- ✦ Agriculture/Future Farmers of America (FFA)
- ✦ PVMS Morning News
- ✦ Exploravision
- ✦ Science Club
- ✦ Yearbook
- ✦ Athletics (Years 2 and 3)
- ✦ National Junior Honor Society (Year 2 and 3)
- ✦ TEDx
- ✦ Fellowship of Christian Students
- ✦ Drama (Fall and Spring Plays)

How will I know where to go?



- ✦ You will have the opportunity to get your schedule on Orientation Day- the week before school starts
- ✦ You will be able to walk your schedule on Orientation Day to familiarize yourself with the building
- ✦ PVMS staff will be on hand to help you navigate from class to class once school begins

PVMS Website



- ✦ <http://pvms.pasco.k12.fl.us>
- ✦ [MYP Candidate School Tab](#)
- ✦ [IB MYP Apparel/Merchandise](#)
- ✦ [Monthly Newsletters](#)
- ✦ [MYP Videos](#)

Questions?

